



G R E A T  
T H I N G  
S C O M E  
I N S M A  
L L P A C  
K A G E S

Developed by  
**SIDDHA** prime

OFFICE SiddhaPrime Estates Private Limited  
233 Sampige Road Malleshwaram Bangalore 560 003  
P +91 95 90 90 1111 E bangalore@siddhagroup.com W siddhabasil.com

W siddhagroup.com

SITE SiddhaBasil 1st Main Road BEL 1st Block  
VidyaranyaPura Bangalore 560 097

Disclaimer: This is not a legal document, the plans and photographs are conceptual. The actual product shall vary according to the sole discretion of the developer. No claims shall be entertained by the developer depending on this material.



# CHOSEN 20 WILL GAIN ACCESS TO EXQUISITE LIVING

Be one of them.

.....  
Thrive at your private isle of comfort.  
Revel in the joy of being a part of something this special.

Stilt Car  
Park +  
4 Floors

20  
Exclusive  
Apartments

03  
BHK

1600-1750  
Square Feet

ONLY A FEW PREMIUM NEIGHBOURHOODS IN THE CITY.

# BELONG IN ONE OF THEM.

Bask in the pride of residing in one of the upscale parts of Bangalore. Enjoy the convenience of an all-encompassing location.

Located at BEL 1st Block the most posh part of Vidyanarayapura in Bangalore

Excellent connectivity to International airport ring roads and city

Proximity to retail like More, Reliance retail Easy Day, and Food World

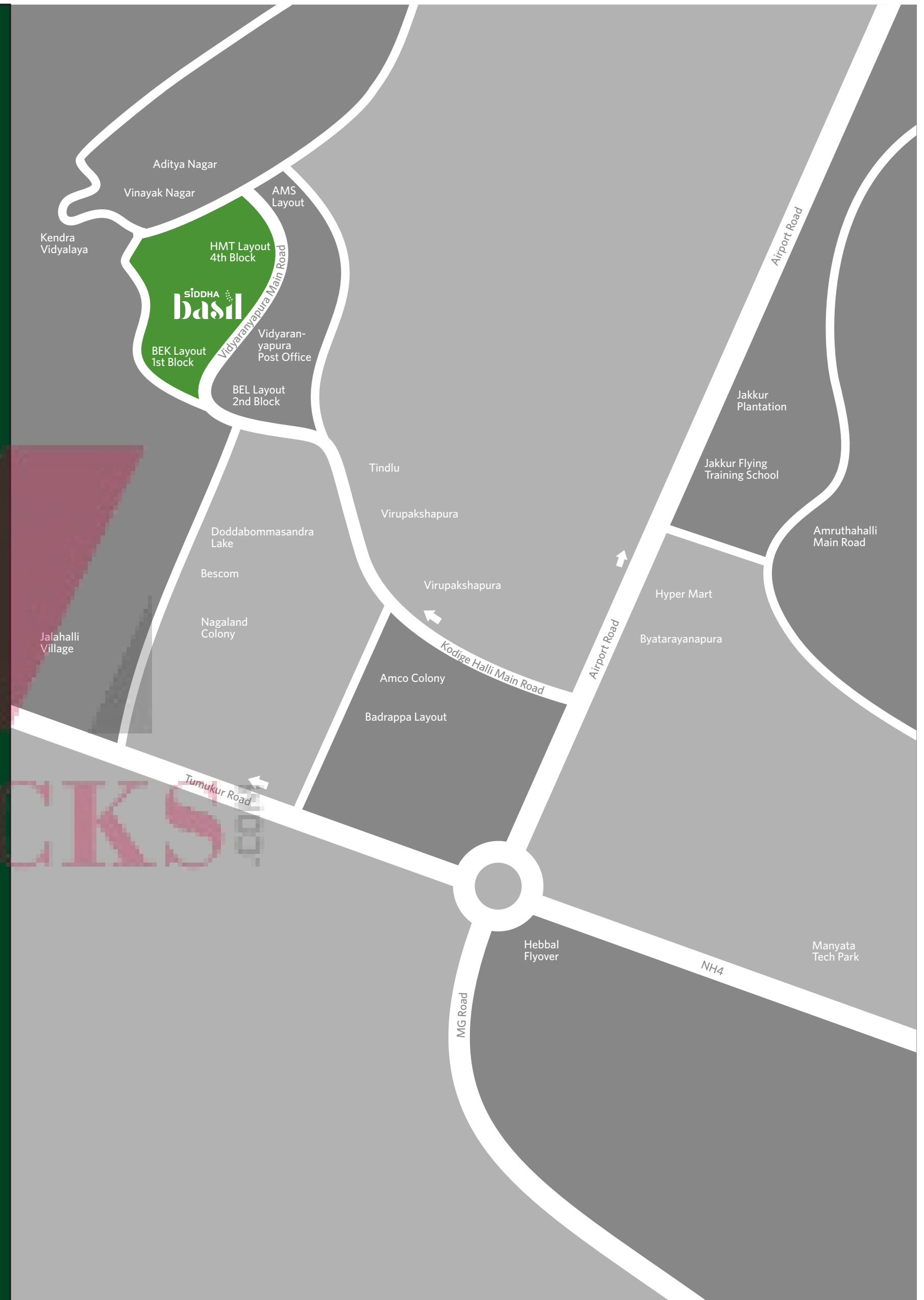
5 kms from Hebbal flyover. Well connected to the entire city with BMTC bus routes

Proximity to major banks like HDFC, ICICI SBI, Axis Bank and SBM

Proximity to leisure outlets like Dominos, Beijing Bites Cafe Coffee Day, Adigas Adyar, Anand Bahvan Ammi'S Biryani

Proximity to reputed schools (MES School, Sri Sri Ravi Shankar School, Dev Mata School, NPS Yelahanka, Mallya Aditi International School, Regency School)

Proximity to reputed colleges (MES College, Seshadripuram college, Yelahanka)



# ONLY A HANDFUL OF LEISURE MOMENTS.

SHARE THEM WITH THE HANDPICKED ONES.

Meditate under the open skies. Converse only with like minded souls. Bask in the glow of exclusivity.

GYMNASIUM

OPEN AIR  
YOGA DECK

BILLIARDS &  
TABLE TENNIS

BANQUET  
HALL

CHILDREN'S  
PLAY AREA

JOGGING/  
WALKING TRACK



ZRICKS.COM

OPEN AIR  
YOGA DECK

ZRICKS

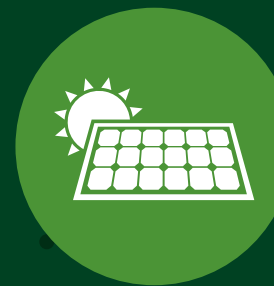
BILLIARDS



ONLY  
24 HOURS  
A DAY.

DON'T SPLURGE THEM ALL ON WORRIES.

.....  
Every little detail taken care of. Get complimentary peace of mind. Sit back and enjoy the special treatment.



Solar Powered System  
for Common Lighting



Water Supply from  
Borewell's & Munciple Water



Advanced CCTV System  
with Security Cabin & Security Room



Rainwater  
Harvesting



Automatic Elevator  
from Reputed Brand



100% Covered  
Car Parking

SIDDHA  
basil





THE

S

P

E

C

I

F

I

C

A

T

I

O

N

S



# BUILDING BLOCKS OF THE EXCLUSIVE LIFE

**STRUCTURE**  
RCC framed structure

**WALLS**  
Perforated Porotherm bricks for external/internal walls for good and acoustic thermal insulation

**FLOORING**  
High quality and large 800mm x 800mm vitrified tiles for living and dining and 600mm x 600mm vitrified for other areas

**MAIN DOOR**  
First quality hardwood door frames. High quality teak veneer door shutters with contemporary design finished

**INTERNAL DOORS**  
Hardwood door frames with moulded doors shutters

**WINDOWS**  
UPVC sliding windows with mosquito mesh

**BATH**  
CP/Sanitary fitting from Kohler/Jaguar or equivalent

**KITCHEN**  
Provision for modular kitchen

**WATER SUPPLY**  
Separate sump tanks for drinking water and borewell water along with overhead tank

**ELECTRICAL**  
Concealed copper wiring with latest modular switches from Anchor or equivalent. 5KV power

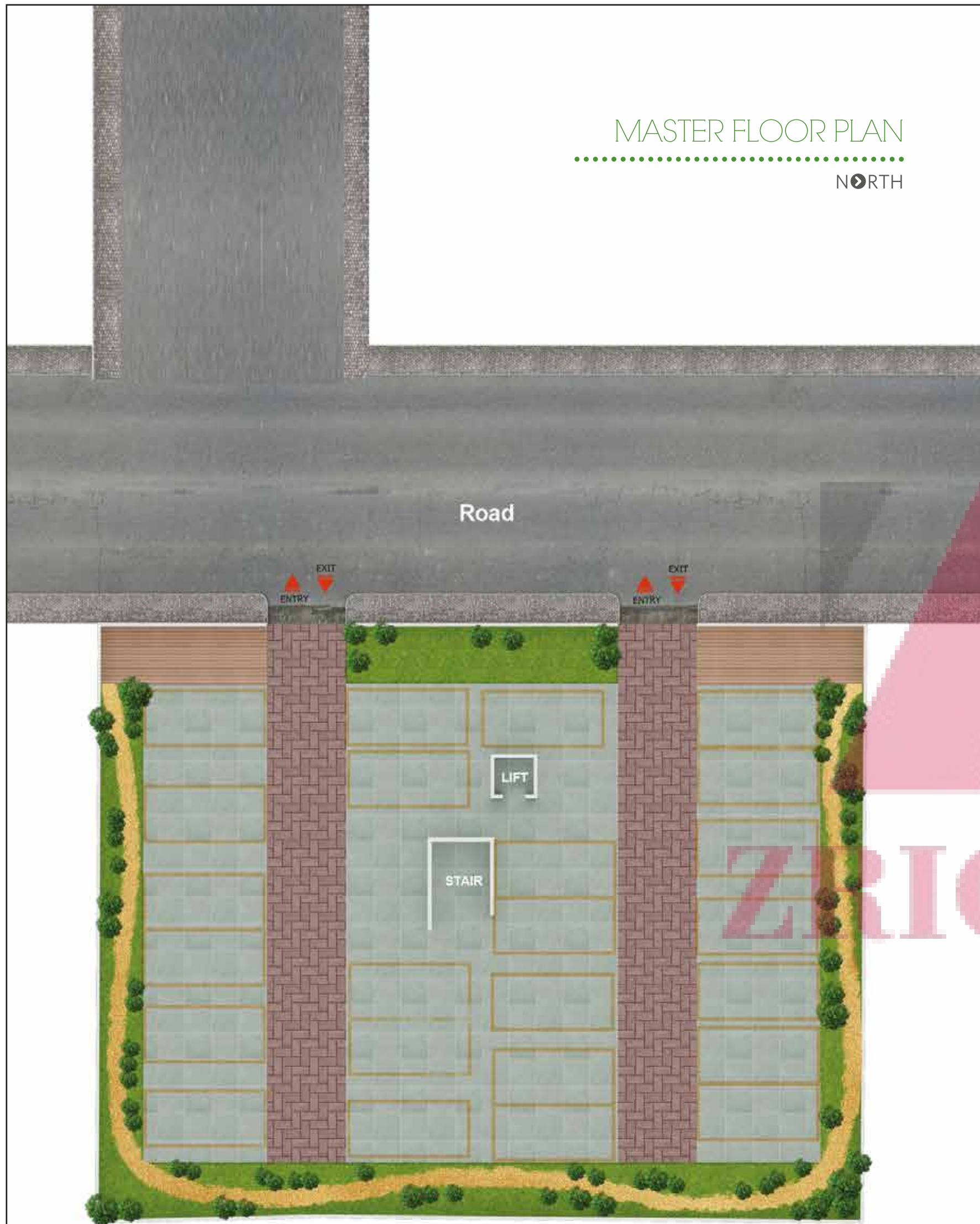
**TV, TELEPHONE & AC**  
TV points in Living and Master bedroom, AC points in all bedrooms, Intercom facility

**POWER BACKUP**  
100% Generator backup for Lights, Fans for flats (Max 1KVA per flat) Backup for Lift, water pump & common lightning

**PAINT & FINISHES**  
Premium emulsion paint for internal walls and Apex or equivalent paint for other external surfaces

# MASTER FLOOR PLAN

NORTH



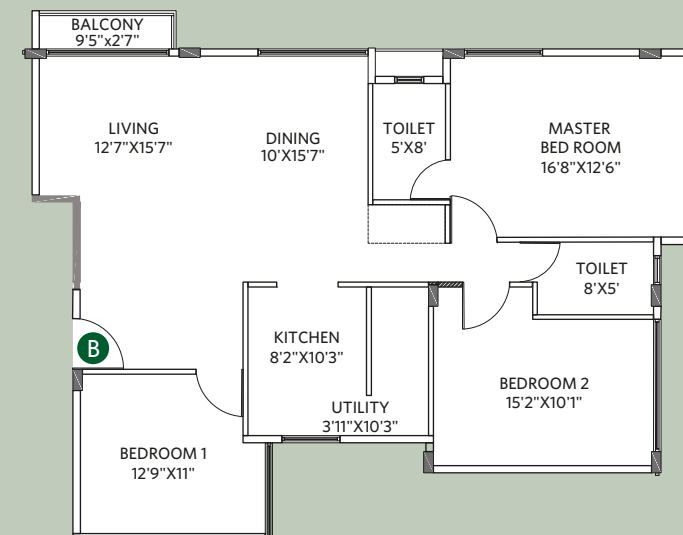
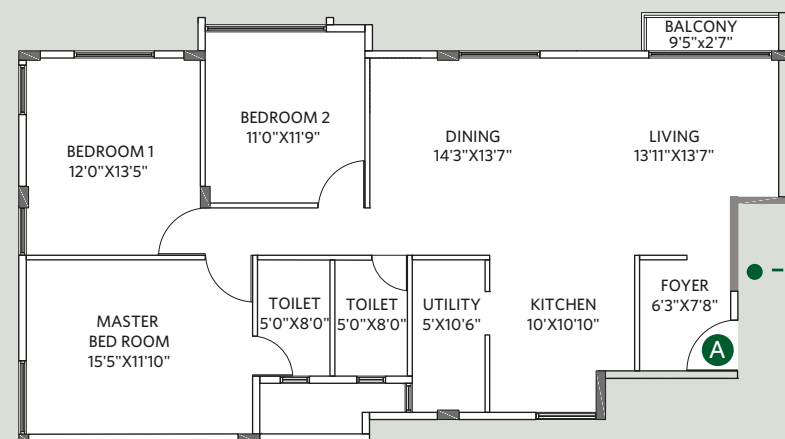
# GROUND to 3RD FLOOR PLAN

NORTH

Area	Sqft	
Flat A	1724	East
Flat B	1736	West
Flat C	1632	North
Flat D	1620	North
Flat E	1601	East



ZRICKS.COM



Area	Sqft	
Flat A	1724	East

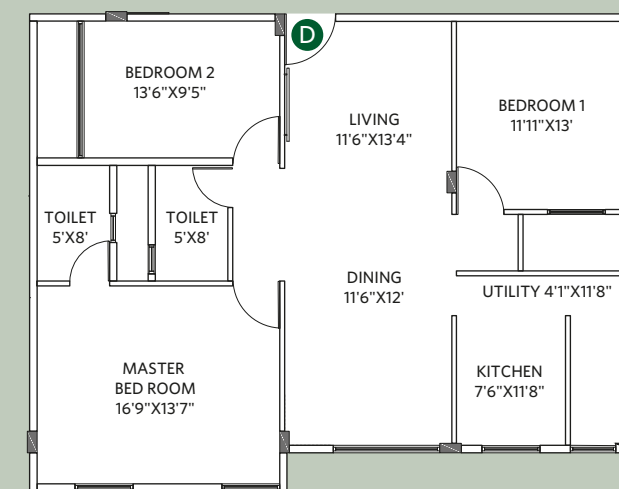
Area	Sqft	
Flat B	1736	West



ZRICKS

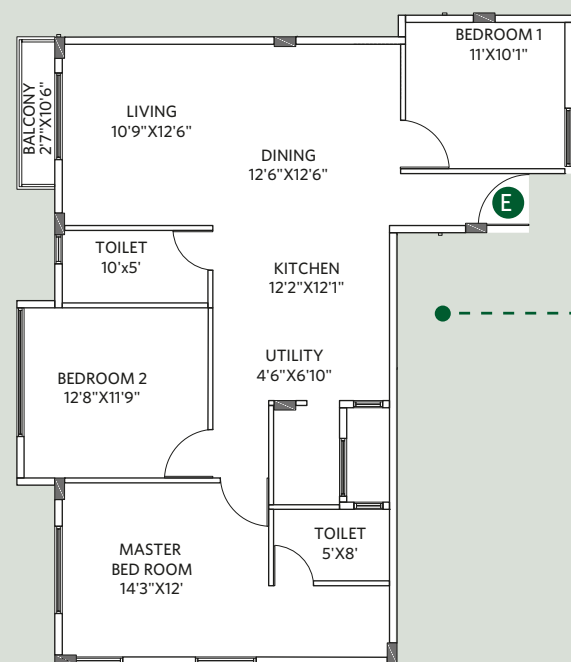


Area	Sqft	
Flat C	1632	North



Area	Sqft	
Flat D	1620	North

# FOUNDERS OF THE EXCLUSIVE LIFE



ZRICKS.COM

Area	Sqft	
Flat E	1601	East

## SIDDHA

Siddha Group, a high class real estate creator, with full fledged offices and services in Kolkata and Jaipur. Since our inception in 1986, Siddha has designed, build and marketed residential as well as commercial buildings ad townships at premium locations in the city.



Operating since 2 decades, we are in three business segments; Real Estate, Equipment leasing, and IT products/services. Our vision is simple and clear "Create beautiful living spaces".

KOLKATA



401+ Apartments 815-1485 Sq ft Sodepur Road



625+ Apartments 865-2295 Sq ft Rajarhat



137 Apartments 540-1385 sq ft Rajarhat



1800+ Apartments 910-2010 sq ft Bonhooghly



122 Offices 360-1575 sq ft Weston Street



3000 Apartments 910-1445 sq ft Rajarhat



3100+ Apartments 1015-1370 sq ft Rajarhat



1800 Apartments 845-1235 sq ft Khardah



BANGALORE



JAIPUR



303 Luxurious Bungalows 141 Acres Pratap Nagar



1012 Apartments 570-1500 sq ft Ajmer Expressway



104 Villas 2580 sq ft and 2178 sq ft Ajmer Expressway



Commercial Spaces MI Road Jaipur

